



The Scenic Beauty of Yamagata:

やまがた景観物語

A Land That All Should See

📍 33 Recommended Sights



Promoting the Scenic Beauty of Yamagata



The prefecture of Yamagata is full of strikingly beautiful nature and rustic townscapes. We have selected 33 particularly recommended spots that we think everyone should have the pleasure of seeing. In addition to its inherent scenic beauty, each spot can speak volumes about its history or background. Also note that the sights mentioned here have parking lots nearby and are easily accessed by car, making it convenient to visit each and enjoy its surrounding areas.

Goal of this Project

● The goal of this project is to select and promote Yamagata's particularly beautiful scenic areas with the hopes of increasing activity within the prefecture by revitalizing interest and encouraging interaction (restoring tourism) within the area.

Process for How Spots are Chosen

- | | |
|--|---|
| <p>1 1. Scenic spots proposed (137 in total)
Scenic spots from Yamagata's towns, cities, and villages proposed for possible inclusion</p> <p>2 Spots surveyed by selection board
Proposed spots are evaluated and rated (based on "Selection Criteria" below)</p> <p>3 33 "Recommended Sights" selected
The selection board meets to officially designate the 33 sights</p> | <p>【 Selection Board Members 】 ※Yamagata Board of Scenic Evaluation Member (Expertise)</p> <ul style="list-style-type: none"> • Prof. Nobuhiro Yamahata
Tōhoku University Of Art and Design *(Architecture/Landscape) • Prof. Ikuko Miyahara
Miyagi University, Concept Promotion Dept *(Tourism) • Sanae Numata
Photographer *(Artistic Beauty) • Tsukasa Hatakeyama
Head of Office at East Nippon Expressway Company Limited, Yamagata Office (Regional Tourism) • Shinya Ono
Head of Office at Yamagata Pref. Dept. of Commerce, Industry, Labor, and Tourism department, Tourism and Economic Exchange Bureau • Katsumi Uesaka
General Manager at Yamagata for Land Development Department |
|--|---|

Selection Criteria

【Sights are evaluated based on the following criteria (Max 20 points)】

- ① Quality of Sight (Does the sight possess qualities representative of Yamagata?) 5 Pts
- ② Background and History (Does the sight possess historical significance?) 5 Pts
- ③ Surroundings (Is the sight conducive to local tourism?) 5 Pts
- ④ Accessibility (Is there nearby parking? Is the sight easily accessed?) 2 Pts
- ⑤ Facilities (Is there a lookout area, restrooms, and other practicalities? Is it well-maintained?) 3 Pts



Enjoying the Sights of Yamagata

There is more to be enjoyed at the views than what can be captured in a photograph. Learn more about each sight to make the experience all the more breathtaking.

Go, see, feel, and spread the word!



Check which Sights to Visit

Start by checking which sights were selected as Yamagata's 33 recommended sights. There are two ways to do this.



1) Visit the "Scenic Beauty of Yamagata" website from your computer or smartphone.



The Scenic Beauty of Yamagata 検索

URL : <http://yamagata-keikanmonogatari.com>



"The Scenic Beauty of Yamagata" QR Code



2) View this pamphlet

Basic information of each sight can be accessed by scanning the QR codes found by each sight on pages 3-10 of this pamphlet.



Visit the Sights and Find Information Signs

Visit the sights that appeal to you.

Each sight has information signs posted in unobtrusive locations.

Look for these signs when you're there to learn more about the sight you are currently viewing.



Picture Sign



Sample Information Sign



Scan QR Codes

Scan the QR Codes placed on information signs to learn more.

This information will include history or tales about that sight, and will help you enjoy what you are seeing on a deeper level.



Rate Sights

Sights can be rated on a 5-star system after accessing its QR code.

Information such as visitor ratings will be used to further spread the word about Yamagata's beautiful scenery and encourage local activity in and around its sights.



Help Spread the Word!

Official Facebook page for "The Scenic Beauty of Yamagata"

In addition to information about the selected sights, the official Facebook page also provides the latest updates about this project. "Like" and share to help spread the word about the beautiful sights Yamagata has to offer! Your participation will help to improve Yamagata's sights for the future.



Official Facebook page for "The Scenic Beauty of Yamagata" QR Code

<https://www.facebook.com/yamagata.keikanmonogatari/>



The Scenic Beauty of Yamagata 検索



Facebook Top Page

Profile Picture

村山 MURAYAMA

1 Yamagata is Known for the Poet Bashō—But There's More!



View of Hōjusan Risshaku-ji from Yamadera Bashō Museum

Hōjusan Risshaku-ji is an old temple notable for the distinctive rock formations of Yamadera, as well as its association with famous haiku poet Matsuo Bashō. You can enjoy a spectacular view of Hōjusan Risshaku-ji, the tone of which changes with each season, from the Yamadera Bashō Museum.

Location/ Yamadera, Yamagata-shi **Contact/** 023-641-1212 **Recommended Seasons/** Viewable year-round. Cherry blossoms can be seen during Japan's Golden Week (first week of May), and autumn leaves can be seen from the end of October until the beginning November.

2 Look Out for Snow Monsters!



Frost-covered trees visible from Jizō Sanchō Station on Zaō Ropeway

These beautiful, wind-shaped formations emerge in the winter. Too irregular to have been built by human hands, they are referred to as "snow monsters" due to their peculiar appearance. On descending from the ropeway, you can enjoy these formations that cover the inclined mountainside.

Location/ Zaō Onsen, Yamagata-shi **Contact/** 023-641-1212

Recommended Seasons/ During the winter season, the snow trees are illuminated, allowing visitors to enjoy them at night, in addition to during the day. This spot is also recommended during other times of year, when you can enjoy fresh green or autumn leaves, depending on the season.

4 Feel a Moment of History



Old dwellings and double-arched bridge viewed from Ushū Kaidō, Narage-juku, & Kanayama River

During the Edo Period of Japan, samurai lords known as "daimyō" would rest at post stations when traveling through Japan. "Narage-juku", located on the Ushū Kaidō travel route, is one such station. These precious dwellings formerly used by daimyō line the town even today and, along with the town's double-arched stone bridge, produce an authentic historical atmosphere.

Location/ Narage, Kaminoyama-shi **Contact/** 023-672-1111 **Recommended Seasons/** Viewable year-round. With a different look each season, this spot exudes a calm atmosphere reminiscent of days of old.



5 Mountain Range with Buckwheat Flowers



View of Mount Gassan and Mount Hayama from Tendō Plateau

A majestic natural sight which overlooks the beautiful mountains of Gassan, Hayama, and, at times Chōkai. From the end of summer through the beginning of autumn, white buckwheat flowers can be seen blooming along the streets, but this spot remains an impressive sight throughout the seasons.

Location/ Tamugino, Tendō-shi **Contact/** 023-654-1111

Recommended Seasons/ Buckwheat flowers bloom around September.

6 A Panoramic View of Civilization and Nature, Blended Harmoniously



An expansive panorama seen from Cherry Park Rainbow Hill, portraying a harmonious blend of nature and civilization

Strolling through the park lined where multi-colored flowers proudly bloom, and then ascending Rainbow Hill, treats you to a highway oasis from which you can overlook the beautiful snow-topped Gassan and Hayama Mountains and majestic Mogami River.

Location/ Saqae, Saqae-shi **Contact/** 0237-86-2111

Recommended Seasons/ Viewable year-round. The park has a play area, and is particularly popular with parents and kids from spring through autumn.

Sights 1 - 6

Sights 7 - 12

7 Rice Fields from the Gods



Kunigidaira rice paddies viewed from Asahi-machi Ipponmatsu Park

The locals refer to this neatly arranged, fan-shaped array of rice paddy fields as the "fan dropped by the gods". When viewed from Ipponmatsu Park, where lilies bloom, these rice paddies provide a strikingly beautiful sight in the spring, summer, and autumn seasons.

Location/ Sanchū, Asahi-machi **Contact/** 0237-67-2113 **Recommended Seasons/** In the spring, the rice fields shine like a mirror. In June, delicate pink lilies bloom along the park's slopes. In the summer, the blue sky strikes a beautiful contrast with the green fields, highlighting the towering Asahi Mountains from afar. In the autumn, the picketed rice ears shine gold like the fields of old-time Japan.



8 History Flows from the Heart of the Town



Mogami River and Aterazawa Townscape viewed from Tateyama ("Nipponichi") Park

This spot gives visitors a spectacular view of the curving Mogami River, the beautiful bridge suspended over it, the town of Aterazawa and its rail terminal, the Murayama basin that expands to the East, and the Asahi Mountains that tower to the West.

Location/ Aterazawa, Ōe-machi **Contact/** 0237-62-2118 **Recommended Seasons/** Viewable year-round. You can enjoy cherry blossoms and vibrant greens in the spring, the snowcapped Asahi Mountains to the West in the

9 Beautiful Enough to be a Painting



The flowing Mogami River seen from Massimo Keiji Museum (Mogami River Museum)

Massimo Keiji was a painter who set up an atelier in this spot, which overlooks the elegantly curving Mogami River, and passionately painted the flowing river up through his final years. This precious spot from the Massimo Keiji Memorial Museum of Art allows you to enjoy the same majestic view while also enjoying his works.

Location/ Ōyodo, Murayama-shi **Contact/** 0237-55-2416 **Recommended Seasons/** Viewable year-round. In the spring, you can enjoy the museum's cherry blossoms, as well as the Mogami River flowing between cherry blossoms on the lakefront below. In the winter, the lead-color river strikes an interesting contrast with the snow-white trees.



10 Ride a Boat Straight into Pastoral Japan



The pastoral scene of Ōyachi Swamp and its brasenias flowers

The brasenias is a rare aquatic plant found in certain areas of Japan, which has been enjoyed since the Edo Period. Enjoy this picturesque scene reminiscent of pastoral Japan while picking brasenias flowers from an old-style boat.

Location/ Tominami, Murayama-shi **Contact/** 0237-57-2001 **Recommended Seasons/** In springtime, you can enjoy the cherry blossoms around the swamp in addition to the brasenias. From the beginning of June through the middle of August, brasenias-picking is enjoyed in old-style boats.



11 Soak in Romantic Taishō-era Japan



Taishō-era atmosphere of the Ginzan hot spring town viewed from Shirogane Bridge

The 3- and 4-story wooden ryokan lodges that line the sides of Ginzan River make the hot spring resort town of Ginzan look like a painting. With visitors wearing summer "yukata" kimonos and the gas-lit lamps that line the town, this area retains a romantic Taishō-era atmosphere reminiscent of 1910-1920s Japan.

Location/ Ginzan-Shinbata, Obanzawa-shi **Contact/** 0237-22-1111

Recommended Seasons/ Viewable year-round. The gas lamps are particularly recommended for viewing in the spring and early summer evenings. In the winter, the contrast between the snow-covered wooden lodges and the gas-lit lamps is marvelous.



12 Retracing the Steps of Poet Mokichi



Nijigaoka Park in Ōshida town overlooking the Mogami River

Poet Mokichi Saitō, who spent time living in the town of Ōshida, was particularly fond of walks in this hilly area, and some of his works praise the beauty of the Mogami River. Stand in what is likely the very spot that served as inspiration for these works.

Location/ Imashuku, Ōshida-machi **Contact/** 0237-35-2111 **Recommended Seasons/** Viewable year-round. In the evenings, the sun that sets over the westward mountains paints the sky a beautiful pink, which reflects off the surface of the Mogami River to produce a sight of unparalleled beauty.



最上 MOGAMI

13 Harmonious View of Mountains and Townscape, 100 Years in the Making



View of Kaneyama town from Mount Tateyama mountains in the distance

Enjoy a view that was 100 years in the making: the residential town of Kaneyama, with its ridged roofs and white walled buildings, was designed with the intent of striking a harmonious balance with its natural surroundings. The view from Mount Tateyama offers a stunning overlook of the town, with Mounts Gassan and Hayama in the distance.

Location/ Kaneyama, Kaneyama-machi **Contact/** 0233-52-2111 **Recommended Seasons/** Cherry blossoms can be seen toward the end of April. The Tateyama hiking trail is open from May through November. Koi fish are released in Ōzeki from the end of April through the end of November. Ōzeki and its park are illuminated from the end of April through the end of September.

14 Horses Freely Graze on the Plains of Kamuro



Kamuro mountain peaks viewed from the high plains of Maemori in Mogami village

This view of the Kamuro mountains depicts an unobstructed scene of nothing but floating clouds, the sound of wind blowing across the plains, and, in the spring through autumn months, herds of horses—a sight which is certain to remind you of the beauty of nature.



Location/ Ōza Mukai-machi, Mogami-machi **Contact/** 0233-43-2262

Recommended Seasons/ This spot is best enjoyed during the summer, with the climate remaining cool even then, when it is filled with lively families spending their summer vacations. The Maemori Summer Festival is held on August 15th, where there is trout catching, among other activities.

15 A Trove of Inspiration for Poets and Wordsmiths



Mount Gassan and Mogami River viewed from the Sabane mountain pass

This spot offers an expansive view of the winding Mogami River, backed with lush trees, the snowcapped Mount Gassan, Mount Hayama, and Mount Chōkai. The beauty and tranquility of this scene has inspired the works of many historical figures, including poets Matsuo Bashō and Mokichi Saitō.

Location/ Funagata, Funagata-machi **Contact/** 023-332-2111

Recommended Seasons/ This spot is particularly recommended for enjoying the changing seasons from spring through autumn, when you can see lush greens and maple autumn leaves. The park facilities are closed in the winter period (late November through mid-April).

16 Mirrored Reflection of Mount Chōkai



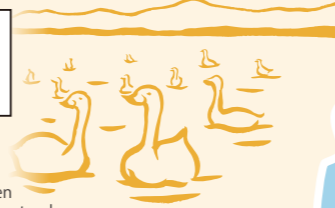
Mount Chōkai viewed from Nonomura water reservoir at Mamurogawa town

This reservoir is sourced from a hot water spring, allowing it to remain unfrozen year-round. This draws swans to the water, making them appear like white clouds afloat a still surface. Mount Chōkai (whose name translates to "bird ocean mountain") can also be seen, both in the distance, and reflected upon the sky blue water.



Location/ Uchi-machi, Mamurogawa-machi **Contact/** 0233-62-2111

Recommended Seasons/ Before rice-planting in May, Mount Chōkai can be seen towering over the clear surface. When rice-planting ends in June, the mountain stands before a wide field of green. In February, swans come to the blue surface.



17 Fields of the Fireflies



The fields of Shika and Ōkura villages, home of the fireflies

This precipitous, mountain-surrounded land is home to the summer "Firefly Concert", at which time the fields are illuminated with candles and enjoyed with live music, producing an otherworldly spectacle so beautiful that locals are intent on preserving it for future generations.

Location/ Minamiyama, Ōkura-mura **Contact/** 0233-75-2111

Recommended Seasons/ The view changes with each season. The "Firefly Concert" is definitely a sight worth seeing.

18 River and Palace Combine to Form Scenic Harmony



Koraikan and Mogami River seen from Tozawa Station

In this sight, the Mogami River flows before the Koraikan, a building complex designed like a royal Korean palace. The scene is further complemented with sprawling fields on the other side of the river that change appearance with the seasons. Also of note is the Mogami Music & Fireworks summer festival, which combines fireworks and music with a breathtaking view of the night sky.

Location/ Kuraoka, Tozawa-mura **Contact/** 0233-72-2111 **Recommended Seasons/** Viewable year-round.

Beautiful flowers bloom in May - June; in winter, you can enjoy a snow-topped Mogami River.

Sights 13 - 18

Sights 19 - 25

19 Yonezawa: A Sight that Truly Captivates



Azuma Mountains and Yonezawa Basin viewed from Onariyama Park

This spot offers a broad view of Yonezawa city and the major mountains of South Yamagata, including Mount Azuma to the south, Mounts Kuriko and Zaō to the east, and the grand peak of Mount Asahi to the north. The train that traverses the town looks almost like a toy model in scale, making for a truly distinguished view.

Location/ Tateyama, Yonezawa-shi **Contact/** 0238-22-5111

Recommended Seasons/ In the spring, cherry blossoms proudly bloom on the inclined north side. A variety of plants naturally grow here as well, making the mountain beautifully green in early summer. In August, the fireworks festival held in the city can be viewed from here. Note that car access is not possible when there is snowfall during the winter.



20 An Inviting Skyline Before You



Lake Hakuryū and the Okitama Basin, viewed from Nan'yō Skypark

Standing from the paragliding departure point within Nan'yō Skypark near the top of Mount Jūbuichi, you can see Lake Hakuryū, the landmark of the city of Nan'yō, and the city of Akayu, backed by a panoramic view that expands from Mount Azuma to Mount Iide and the Okitama Basin.

Location/ Akayu, Nan'yō-shi **Contact/** 0238-40-3211

Recommended Seasons/ This is a great spot to come in the summer to avoid the heat, and in the autumn to enjoy maple-colored leaves and a sky full of clouds. In wintertime, you can go by snow-mobile (Reservations required)



21 Follow the White Rabbits through the Fields



Mount Nishi and the Flower Nagai Line as seen from Shirousagi Station

Standing on the train platform at Shirousagi (meaning "White Rabbit") Station gives you a view of fields in the foreground, with the sprawling Mount Nishi in the distance. The "white rabbit" trains that go up and down the north/south Flower Nagai train line make this pastoral scene feel like a painting.

Location/ Shirousagi, Nagai-shi **Contact/** 0238-87-0863

Recommended Seasons/ Viewable year-round. The morning sunlight illuminates the fields beautifully around the months of September and October, when the rice fields at the base of Mount Nishi mature into a shimmering gold.



22 A Breathtaking Sight You'll Never Forget



Grand panorama of the Iide mountain peaks from Oguni-machi Taruguchi Mountain Pass

From the lookout near the top of the Taruguchi mountain pass in south Oguni-machi, you can enjoy a majestic view of the Iide mountain range. On sunny days, the snow on the mountains appears like a beautiful white line running across the sky. This familiar sight is often seen in photos and paintings, and draws many visitors each year.

Location/ Tamagawa, Oguni-machi **Contact/** 0238-62-2416

Recommended Seasons/ The forest trail is passable from spring through autumn. The view itself can be enjoyed each season.



23 One Hundred Years and Still Running: A Photogenic Piece of History



The Arato Railway Bridge, still functional after a century, with the Mogami River flowing by

The Arato Railway Bridge was originally built onto the Tōkaidō Line in 1887, and then relocated to its current position in 1923. Still functional to this day, the bridge remains a precious piece of engineering heritage from the recent past. The view of the towering Asahi Mountains in the background, with the gracefully flowing Mogami River, sewn together by the Flower Nagai train line, make for a truly picture perfect sight.

Location/ Aratokō, Shirataka-machi **Contact/** 0238-85-6123

Recommended Seasons/ Viewable year-round. In spring, cherry blossoms bloom around the tracks, allowing you to view the flowers while riding the train. The Asahi mountains become a deeper green in early summer, with their snowy caps striking a beautiful contrast with the blue sky. In the autumn, Japanese silver grass fills the Mogami River plains, and in the winter, the snow-turned fields with combine with the steel bridge and Asahi mountains to look like an ink painting.



24 Scattered Village, Beautifully Afloat in the Fields

Japan's greatest view of scattered villages, viewed from Dondendaira Lily Garden



This view of dwellings, scattered across a field 1200ha in size, is lauded as being the most beautiful scattered village complex of its kind in Japan. This sight treats visitors to a wide variety of appearances depending on the season, weather, and time of day.

Location/ Hagyu, Iide-machi **Contact/** 0238-87-0523

Recommended Seasons/ Enjoy a variety of completely different views depending on the season and weather. The site contains an east-facing lookout, so coming at dawn is also recommended.

25 A Different View with Each Season

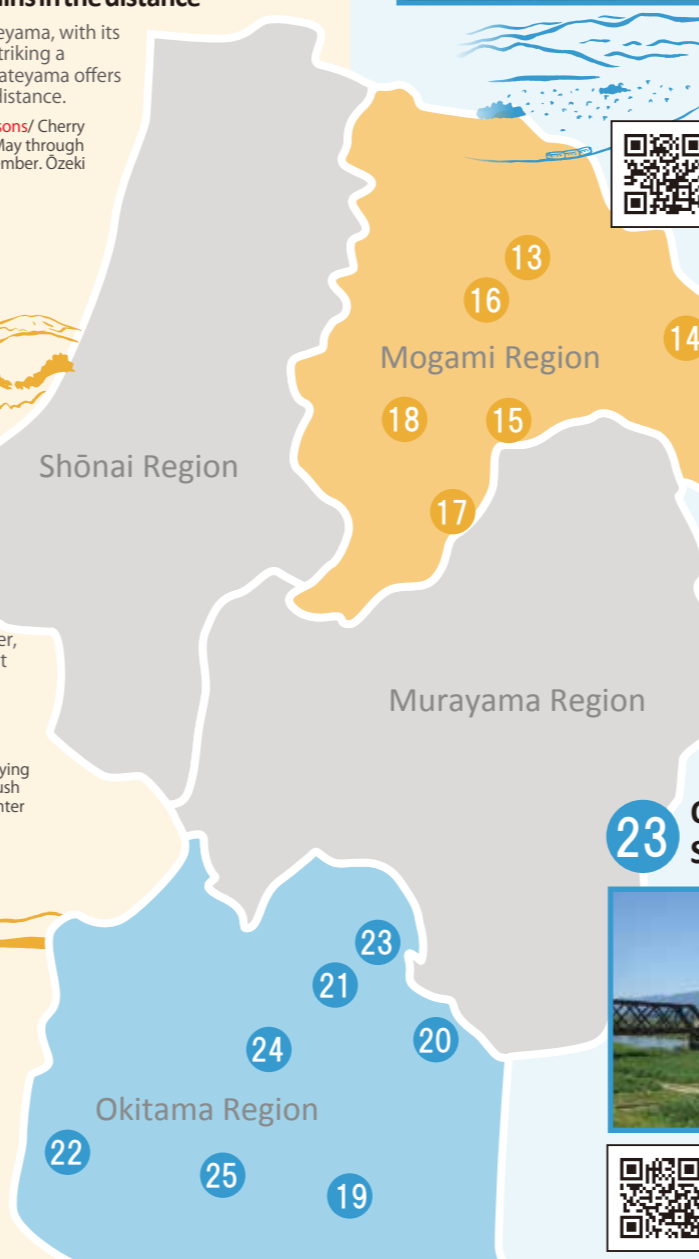
Lakeside view of Shirakawa-gō and Iide mountain range



The Iide mountain range straddles the three prefectures of Fukushima, Yamagata, and Niigata, and its grandiose height of 4000m results in it also being referred to as the "Tōhoku Alps". This lakeside view changes appearance with each season, but provides a spectacular view any time of year.

Location/ Sugō, Iide-machi **Contact/** 0238-87-0523

Recommended Seasons/ Viewable year-round. From April through mid-May, the lake is full and the newly budding plants appear yellow-green. The snow-topped Iide Mountains have a different appearance each season, and can be enjoyed anytime throughout the year.



庄内 SHONAI

Sights 26 - 31

Sights 32 - 33

26 A Spiritual Calm Emanates from this Pagoda



National Treasure "Mount Haguro Five-Story Pagoda" and its sugi trees

Mount Haguro, one of the Three Mountains of Dewa, has long been a sanctuary for monks of the Shugendō religion. The mountain's five-story pagoda, designated a national treasure and considered to be the oldest pagoda in Tōhoku, along with the 350-500 year-old sugi trees that line the pathway leading up to it, invoke a spiritual clarity within all those who visit.

Location/ Tōge, Haguro-machi, Tsuruoka-shi **Contact/** 0235-62-2111
Recommended Seasons/ Disciples are welcome year-round, but protection from the cold is a must during the wintertime.

27 A Port Experienced Through All Five Senses



View of Bentenjima and the setting sun over the Sea of Japan, viewed from Nezugaseki Marine Park

Enjoy this relaxing area which allows you to enjoy nature through all five senses: feel the brisk ocean breeze, while gazing at the distinguished island of Bentenjima and the setting sun over the expansive Sea of Japan, all while enjoying the taste of delicious seafood and hearing the cries of the seagulls at this history-entrenched port.

Location/ Nezugaseki, Tsuruoka-shi **Contact/** 0235-43-4617
Recommended Seasons/ During the summer, the setting sun shows more shades of red, and the climate is typically moderate, making for the best time to enjoy this beautiful view of the sun setting into the Sea of Japan.

29 Historic Rice Storehouses, Still Part of the Present



The Sankyo rice storehouses and zelkova trees of Sakata, the seaport of rice

Even over 120 years after their construction, the Sankyo warehouses still remain in use today, bringing the town's history of rice storage into the present. The zelkova trees, known as "keyaki" in Japanese, planted behind the warehouses over 150 years ago to control temperatures in the summer, give the sight even more character, and display a rich range of colors as the seasons change throughout the year.

Location/ Sankyo-machi, Sakata-shi **Contact/** 0234-26-5746
Recommended Seasons/ Viewable year-round. A fantastic sight to see in any season, the area shifts from fresh green, to autumn brown, to snowy white throughout the year. The storehouses are lit up at night, which is also a recommended sight to see.



30 A Unique View from this Treasured Island



View of the Sea of Japan and Mount Chōkai from the "mystical" island of Tobishima

Tobishima, Yamagata's only separated island, is an attraction in itself. Standing from the Hanatozaki Observation Deck, you get an exceptional view of Mount Chōkai in the distance to the left, with contrastingly sized islands in the foreground. This is the only spot that gives you a view of the majestic Mount Chōkai as a backdrop to the Sea of Japan.

Location/ Tobishima, Sakata-shi **Contact/** 0234-26-5746
Recommended Seasons/ Viewable year-round. There is also a lot to enjoy when viewing this sight from a boat. Dolphin roam the waters in groups in the April - June months. In May and June, you can enjoy feeding the sea gulls. In June and July, you can see flying fish leaping out of the water.

31 Messenger of the Kami



Tamasudare Falls: Yamagata's highest waterfall

Legend tells that 1200 years ago, celebrated Buddhist monk Kūkai, lead by the word of the kami, discovered and named this waterfall, which—at 63 meters—is the highest in Yamagata. Watching the falling water surrounded by the tall, mossy sugi trees is an awesome sight enjoyed by visitors in any season throughout the year.

Location/ Masuda, Sakata-shi **Contact/** 0234-26-5746
Recommended Seasons/ Viewable year-round. Enjoy a variety of colors throughout the year, including fresh greens, autumn leaves, and winter snow. From mid-January until early February, you can enjoy the waterfall in a frozen state. You can also come just when it starts to warm up, and you may even be lucky enough to see the moment the frozen ice thaws and shatters.

32 Standing at the Center of the Shōnai Plains



Shōnai Plains, Mogami River, and Mount Chōkai viewed from Chōkai Forest

Standing from this hilly region at an altitude 200-300 meters gives you a spectacular view of Mount Chōkai to the north, Mount Gassan to the south, and a horizon that divides the sky and the Sea of Japan, with the Mogami River majestically weaving through the Shōnai plains.

Location/ Tsuchibuchi, Sakata-shi **Contact/** 0234-26-5746
Recommended Seasons/ Viewable year-round. Enjoy a variety of colors throughout the year, including fresh greens, autumn leaves, and winter snow. The Shōnai Plains and Mogami River have a completely different appearance between rice planting season and harvest season. The addition of the setting sun completes this fantastic view.

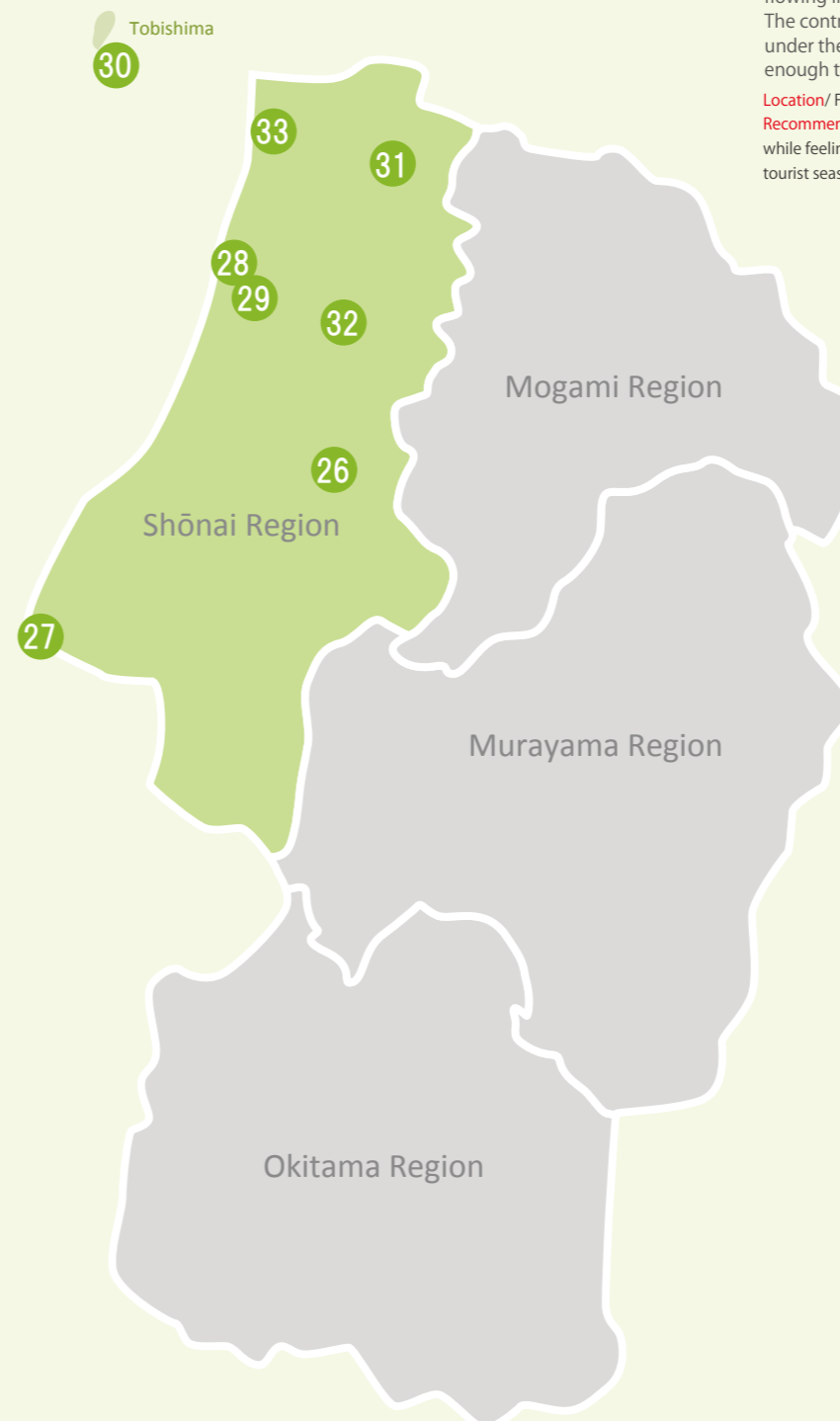
33 History, Romantically Silhouetted against the Sunset



Jūroku-rakan stones and Sea of Japan as seen from the Yuza-machi Fukura coast

The Jūroku-rakan stones are Buddhist carvings made in volcanic rock, flowing in the Sea of Japan as a result of eruptions from Mount Chōkai. The contrasting view of the tranquil stones against the Sea of Japan under the blue sky and silhouetted against the setting sun is stunning enough to make you lose track of time.

Location/ Fukura, Yuza-machi **Contact/** 0234-72-5886
Recommended Seasons/ Spring through autumn. The setting sun is most impressive when viewed while feeling the ocean breeze on a sunny day. The area is illuminated with lights during the summer tourist season, producing a beautifully ethereal spectacle.



Learn more about each sight by scanning the QR codes in this pamphlet!

※P3 - P8
 Details of each sight, including photos, access info, and event info, can be accessed by scanning the QR codes found to the right of each sight in this pamphlet.

The Scenic Beauty of Yamagata: **やまがた景観物語**
 A Land That All Should See
 33 Recommended Sights

Check our website too!

"The Scenic Beauty of Yamagata" Official Website
<http://yamagata-keikanmonogatari.com>

The Scenic Beauty of Yamagata 検索

Also Recommended!

More Sights, Organized by Theme

The 33 recommended sights introduced in this pamphlet were selected from among of total of 137 candidates—but there are still many more spectacular sights we'd love for you to see. This section introduces more of our recommendations, with sights grouped by theme. Be sure to also explore these spots when visiting the other recommended sights.

※Scan the QR codes to bring up a point of view map.

Fields and Parks with Spectacular Views

This section introduces some fields and parks that have spectacular views, and that allow you to experience the distinctive traits of Yamagata. Each of these sights possesses its own unique charm, and is remarkable in its own respect.



Shiroyama, Tendō-aza, Tendō-shi

Tendō Park (Maizuru Mountain)
Maizuru Mountain (also known as Shiroyama, or "Castle Mountain") is said to be the grandest of Yamagata's Middle Ages castle mountains. The lookout provides an expansive view of the city of Tendō, Mount Gassan, the Asahi Mountain Range, and the Mogami River. On a clear day, you can see as far Mount Chōkai.



Tateoka, Murayama-shi

Higashizawa Rose Park
In April, roughly 1000 delicate mizubasho ("skunk cabbage") flowers bloom, and around 300 cherry blossoms are lit up at night, producing a fantastic sight. This spot is also known as being a popular spot for lovers, and ringing the "rose bell of happiness" is said to promise eternal love.



Higashine, Higashine-shi

Omoriyama Park
This spot provides a westerly view of the city of Higashine, which contains a variety of sights including the cityscape, fruit groves, fields, and more.



Jion-ji, Sagae-shi

Sannodai Park (Jion Temple)
This park gives you a full view of the Jion temple complex and town. Being situated on a steppe, this spot serves as the perfect location to take a moment to breath in the rich nature that the Sagae area has to offer, with a spectacular view of the Sagae River and Mount Nagaoka.



Nagaoka, Sagae-shi

Sagae Park (Mount Nagaoka)
Sagae Park is situated in the Nagaoka mountain range, located in the center of the city of Sagae. This spot has an amazing lookout, allowing you to view the Yamagata Basin, along with Mounts Gassan, Zaō, and Asahi. In mid-May, you can view what is proudly offered as the greatest showing of rhododendron flowers in the Tōhoku region, which brings vibrant colors through the city.



Tōka-machi, Shinjō-shi

Gensan no Mori
This spot provides a different view with each season, from lush greens, to autumn leaves, to snow. This area is also home to the "Mayu no Sato" market, where you can purchase goods directly from local producers and manufacturers.



Nakawatari, Sakegawa-mura

Yozō Mountain Pass
The Yozō Mountain Pass offers a spectacular panoramic view of the village of Sakegawa. The sunset over the Ōu Mountain Range is a fantastic sight that can be viewed from this spot, so it's best to come here right around sundown.



Sumomoyama, Yonezawa-shi

Totoro Forest, Sumomoyama
With a strong resemblance to the beloved anime character "Totoro", and its surroundings that change appearance with the seasons, Totoro Forest in Sumomoyama remains a popular spot for locals to bring those visiting the area.



Akutsu, Takahata-machi

Takahata Post Station
With each season, the varying colors of its surroundings bring out a color gradation with this station's three-level pagoda. In addition to its history, this area is enjoyed for leisure even today as a park, and welcomes a lively crowd for hatsumōde (first temple visit on the Japanese New Year) on the 1st of each January.



Karikawakasayama, Shōnai-machi

Windome Tachikawa
The lookout from the Windome Center, which was established as a pioneer of wind-generated power, provides a great view overlooking Mount Gassan to the southeast, Mount Chōkai to the north, and the Shōnai Plains.



Karikawa, Shōnai-machi

Fūsha Shijō - "Windmill Field"
As an early adopter of wind-generated power in Japan, the windmills here made use of the "Kiyogawa Dashi"—a notorious local wind. The field grounds alone boast 8 windmills. Although the field changes faces with each season, the majestic windmills continue to spin year-round.

"Scenic Heritage Spots" that Uphold Yamagata's Scenic Regulations



"Scenic Heritage Spots" are spots designated by the Board of Scenic Evaluation as being representative of the area, and of upholding article 26 of Yamagata's Scenic Regulations, with spots being selected for the purpose of preservation for future generations. Selections are proposed by the prefecture's cities, towns, villages, and groups that are committed to investing in local development. To help bring as many people to these spots as possible, signs have been posted at all sites that have received this designation.

Spots for Enjoying the Mogami River

Sourced from Mount Nishiazuma at the border of Yamagata prefecture, the Mogami River is regarded as one of the three most rapid rivers in Japan. Throughout its length of 229 km, it penetrates through the entire prefecture, at times narrowing, and at times flowing into basins, before reaching its mouth. "Mogami-gawa" is also the anthem of Yamagata Prefecture. Designated on March 31st, 1982, this anthem, whose lyrics describe the river as it flows into the ocean, were written by Emperor Hirohito after he visited the prefecture in 1925; inspired by the river, he composed it as a "waka" poem to read at the following year's "Utakai Hajime", an annual poetry reading held on the January 1st at the Imperial Palace in Tokyo.



Izumi, Nakayama-machi

JR Aterazawa Line Railway Bridge, with Mogami River and Mount Gassan
Enjoy three of Yamagata's proudest sights at once: Mogami (Yamagata's "mother river"), Mount Gassan (one of the three "Dewa Mountains"), and the JR Aterazawa Line Railway Bridge (the oldest railway in Japan that is still in use). The JR Aterazawa Line's blue cars, combined with a clear sky and snow-topped Mount Gassan in the background, is a powerfully inspiring sight that certainly worth seeing.



Ōtani, Asahi-machi

Mogami River Walking Path and Kyūmeikyō Bridge
This beautiful, steel-reinforced concrete arch bridge that crosses the Mogami River, with its open base and towering reverse arch, excels in design, and produces a striking view with the river below it.



Motoaikai, Shinjō-shi

Mogami River with Yamukidate
The sight of Yamukidate appears different with each season, covered in lush greens in early summer, and maple-turned leaves in the autumn. At twilight, the setting sun reflects vividly off the river surface, creating one of the most impressive sights in the area.



Shimizu, Ōkura-mura

Mogami River and Mount Gassan, viewed from Shimizudai
This rotary club-established rest area is on a high promontory, allowing you to view both Mogami River and the settlement of Akamatsu at once in a view that changes with each season. A fantastic view point found right upon entering Ōkura village from the neighboring Funagata.



Furukuchi, Tozawa-mura

Mogami River Pass viewed from Furukuchi
The lookout positioned here along the Mogami River allows you a quiet, undisturbed view of the waters flowing by. Descend the steps to get close up to this spot where boats are seen passing by.



Kawai, Nagai-shi

Merging of Mogami and Shirakawa Rivers
Designated by the prefecture in 1998, this is the inaugural "Mogami River View Spot", and the point where the Mogami and Shirakawa rivers join together. The gracefully flowing Mogami River merges with the lively Shirakawa River, and on certain days, the two rivers even have different colors.



Shōbu, Shirataka-machi

Walking Path over Remains of Kurotaki Waterfall
This area, whose shallow bedrock impeded boats, was famously carved out by Kyūzaemon Nishimura, a tradesman from the Ōmi province (present-day Shiga Prefecture) in the age when boat transport was prominent. Now, there is a walking path by the river, allowing you to hike along the water while feeling the river breeze.

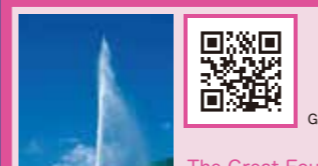
Spots for Enjoying the Sea of Japan and its Waterfront

There is more to Yamagata than mountains; the prefecture is filled with a diverse range of nature, with fantastic views of the ocean, rivers, canals, and more.



Ōwarabi, Yamanobe-machi

Tamamushi-numa Reservoir
Selected as one of Japan's "100 Reservoirs", Tamamushi-numa's surroundings are kept clean thanks to Central Tourism Association's efforts in ensuring that all trash is removed. The waters are also a popular fishing spot.



Gassanzawa, Nishikawa-machi

The Great Fountain of Gassan Lake
The Great Fountain of Gassan Lake erupts water every hour, with each eruption lasting around 15 minutes. Not only does this fountain serve as a symbol of Gassan lake, it also has the honor of being the tallest-spouting fountain in Japan.



Yunohama, Tsuruoka-shi

Yunohama Hot Spring (Nagaiwa Square)
Nagaiwa Square neighbors Yamagata's largest ocean-water bathing spot, which is sprawled along the coastline at Yunohama Hot Springs. The beautiful sunset at the Yunohama coastline was selected as of the "100 Sunsets of Japan".



Fukura, Yuza-machi

Misaki Park
This cliff, which was shaped from corrosion caused by Mount Chōkai's volcanic activity and rough waves from the Sea of Japan, provides for an amazing view, and offers the closest view of the island of Tobishima. It is also a historical spot, known for being mentioned in Matsuo Bashō's great literary work, "Oku no Hosomichi".



Haguro-machi, Tsuruoka-shi

[Scenic Heritage Spot 1] View of Shōnai Plains from Forest of Creation
The terrace from the Forest of Creation Interaction Building in Tsuruoka city presents a panoramic view of the Shōnai Plains extending toward the Sea of Japan, with Mount Chōkai, a symbol of Yamagata, in the distance. This fantastic view can be experienced differently with each season. (Designated on March 10th, 2010)



Shimokomatsu, Kawanishi-mac

[Scenic Heritage Spot 2] View of Yonezawa Basin from Shimokomatsu Kofun Grounds
The Shimokomatsu Kofun grounds is a large grouping of ancient tombs called "kofun", built from the 4th - 6th centuries. From the observation spot built along the walk path (Kofun T41), you can enjoy a view of the dwellings in the Yonezawa Basin and the scattered the homestead woodlands and fields, contrasting against the Ōu Mountain Range. (Designated on March 17th, 2011)



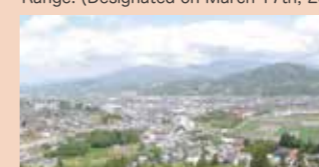
Kisawa, Yamagata-shi

[Scenic Heritage Spot 3] Overlook of Yamagata Cityscape Surrounded by Mountains
Heading west on prefectural route 17 from Yamagata City leads to an overlook that was built by the local community. From here, you can get an excellent view of the city and its mountains. (Designated on March 16th, 2012)



Nagasawa, Funagata-machi

[Scenic Heritage Spot 4] View of Mountain River and Village from Funagata Wakaayu Hot Springs
The terrace at Wakaayu, a hot springs resort at Funagata-machi, provides a panoramic view of the Oguni River and village, which peacefully blend into the mountains. (Designated on March 19th, 2013)



Hayama, Kaminoyama-shi

[Scenic Heritage Spot 5] Kaminoyama Cityscape and its Surrounding Mountains, Viewed from Mount Hanasaki Lookout
This lookout spot was set up by locals in the belly of Mount Hanasaki, just behind Kaminoyama's Hayama Hot Springs resort. The spectacular view of Mount Zaō and the fields at the mountain base, combined with the Kaminoyama cityscape, is truly representative of Yamagata prefecture.



Oyama, Tsuruoka-shi

[Scenic Heritage Spot 6] Eights Views of Nature, Cityscape, and Shōnai Plains Surrounded by Mountains in Oyama
Oyama Park in Oyama, Tsuruoka city has 8 "Oura" view spots set up around the park, from which you can view Ramsar-designated wetlands, the fields of the Shōnai Plains, and Gassan, Chōkai, and other mountains. (Designated on March 17th, 2016)



Check these out too!



Additional Recommended/Seasonal Event Info for the Sights

※Numbers refer to the sight ID numbers used in this pamphlet.

3 Kaminoyama Castle Festival [Kaminoyama-shi, Murayama Region]

A stage is set up in front of Kaminoyama Castle where various local arts are performed.

5 634 Matsu Gathering [Tendō-shi, Murayama Region]

A children's event for enjoying nature (Hiking, Paper Airplane Competition).

22 Otama Kawakuma Festival [Oguni-machi, Okitama Region]

A mock bear hunting performance performed by traditional "Matagi" winter hunters, which includes callers seeing who can shout the loudest.



- Spring -

27 Nezugaseki Fishing Festival [Tsuruoka-shi, Shōnai Region]

Nezugaseki is known as being a fishing town. Join local fishermen at this market for freshly caught fish brought straight from the water! Fish-related events held all day.

28 Hiroyama Cherry Blossom Festival [Sakata-shi, Shōnai Region]

During the festival, Edo-era boats and the lighthouse are lit up. The park is filled with lanterns and street vendors, making this a popular event for locals.

31 Illuminated Tamasudare Waterfall [Sakata-shi, Shōnai Region]

With a height of 63 m and width of 5 m, Tamasudare is the largest waterfall in Yamagata. The main drop is lit up at this event, producing a beautiful, otherworldly feel.

5 Tendō Plains Festival [Tendō-shi, Murayama Region]

A BBQ party featuring local Tendō beef.

5 Buckwheat Flower Festival [Tendō-shi, Murayama Region]

Walk through the buckwheat flower fields and experience making your own soba noodles

6 Yume Tane @ Sagae [Sagae-shi, Murayama Region]

Enjoy a wide range of entertainment, including food, games, and relaxation.

7 Himesayuri Festival [Asahi-machi, Murayama Region]

Local goods are sold at the Ipponmatsu Park parking lot, surrounded by delicate "himesayuri" lilies that only bloom in the Asahi/Iide Mountain area.

8 Ōe Fireworks and Water Lights Festival [Ōe-machi, Murayama Region]

The oldest fireworks festival in Yamagata. Enjoy the magnificent sight of fireworks being launched from 3 locations, with 2000 light towers reflecting on the river surface.

10 Old-Style Boat Race [Murayama-shi, Murayama Region]

Event for enjoying racing in old-style boats surrounded by bransia flowers

11 Mountain Vegetable Festival [Obanzawa-shi, Murayama Region]

Enjoy local song and dance at the heart of this hot spring town, with mountain vegetable soup and locally brewed sake.

11 Watermelon Festival [Obanzawa-shi, Murayama Region]

Enjoy free watermelon and locally brewed sake at this hot spring town renowned for having the greatest watermelon produce in Japan.

12 Ōshida Mogami Fireworks Festival [Ōshida-machi, Murayama Region]

Enjoy competing mikoshi shrines and lights along the river underneath a massive spectacle of fireworks.

13 Kaneyama Festival [Kaneyama-machi, Mogami Region]

This summer festival, held annually on August 14th - 16th, features dazzling mikoshi shrines dancing through town. On the final day, enjoy an evening fireworks festival that lasts till late at night.

14 Maemori Plains Summer Festival [Mogami-machi, Mogami Region]

This event allows you to enjoy summer on the high plains of Maemori. Enjoy trout catching and other activities.

15 Sabane Sumo Competition [Funagata-machi, Mogami Region]

A traditional competition dedicated to the Sabane shrine for lasting relationships, children, and long life, said to have originally started 250 years ago by men wanting to show off their might in a bout of sumo.

16 Mamurogawa Festival [Mamurogawa-machi, Mogami Region]

Traditional Bon dancing takes place at the station on the night of the 16th. The following day features live song and dance performances and a parade through the town.

17 The Shika Firefly Concert [Ōkura-mura, Mogami Region]

Enjoy a display of roughly 1200 fireflies in the Shika rice field, which was selected as one of the "100 rice fields of Japan", accompanied by colorful piano and ocarina music.



- Summer -

18 Mogami Music and Fireworks Festival [Tozawa-mura, Mogami Region]

The latest computer technology is used to perfectly synchronize music and fireworks in this spectacular show!

20 Sky Festival [Nan'yō-shi, Okitama Region]

A nationwide festival featuring hang gliding and paragliding at Nan'yō Skypark. The enjoyment continues with a party at night.

21 Hayama Shrine Annual Festival [Nagai-shi, Okitama Region]

Enjoy an audacious lion dance as it purifies the city in this ancient yearly festival that pays respect to the area's mountain spirits.

24 Lily Festival [Iide-machi, Okitama Region]

The largest celebration of lilies in Tōhoku.

25 Snow Egg Festival [Iide-machi, Okitama Region]

A festival that lets you play in the snow in the middle of summer! Enjoy this cool event under the hot summer sun with snow fights, snow treasure hunts, watermelon splitting, and more.

26 Flower Festival [Tsuruoka-shi, Shōnai Region]

At this festival, mikoshi shrines for the Three Mountains of Dewa parade around Kagami Pond in a procession joined by Buddhist statues adorned with metaphorical flowers.

26 August 1st Festival [Tsuruoka-shi, Shōnai Region]

In this participatory event, Buddhist homa are lit at the garden of Hachiko Shrine on Mount Haguro to pray for good crops and household safety.

27 Squid Festival [Tsuruoka-shi, Shōnai Region]

Enjoy this world-class event that pays homage to the squid, with squid mouth (to eat), a squid ping pong competition, and calligraphy using squid ink and squid brushes.

30 Sakata Port Cruise [Sakata-shi, Shōnai Region]

A cruise that goes around Sakata Port. Takes place every Saturday evening from July through August.

30 Tobishima Fishing Experience & Tour [Sakata-shi, Shōnai Region]

A 1-night, 2-day tour that allows you to experience gillnet fishing firsthand. Participants get to keep all fish that are caught.

31 Illuminated Tamasudare Waterfall [Sakata-shi, Shōnai Region]

With a height of 63 m and width of 5 m, Tamasudare is the largest waterfall in Yamagata. The main drop is lit up at this event, producing a beautiful, otherworldly feel.

32 Chōkai no Mori Musical Festival [Sakata-shi, Shōnai Region]

An annual music festival and concert held at Chōkai no Mori.

33 Jūroku-rakan Festival & Illumination [Yuza-machi, Shōnai Region]

A prayer for ocean safety takes place in front of the Jūroku-rakan stones. The stones are illuminated at this time, producing a beautifully ethereal spectacle.

4 Tour de France Festival [Kaminoyama-shi, Murayama Region]

Enjoy this biking event through Narage-juku.

5 Fresh Soba Festival [Tendō-shi, Murayama Region]

Enjoy the taste of fresh soba while surrounded by nature.

9 Ōyodo Potato Festival [Murayama-shi, Murayama Region]

Eat boiled potatoes while enjoying the majestic view of the Massimo Keiji Museum (Mogami River Museum).

10 Buckwheat Flower Festival [Murayama-shi, Murayama Region]

Enjoy the view of the seasonally planted buckwheat flowers while eating soba (buckwheat) noodles by the Mogami



- Autumn -

11 Mushroom Festival [Obanzawa-shi, Murayama Region]

Enjoy song and dance at the Ginzan hot springs resort town while being served mushroom soup and locally brewed sake.

13 Kaneyama Town Produce Festival [Kaneyama-machi, Mogami Region]

A major autumn event held at Kaneyama town where you can enjoy everything from local flavors to traditional cultural arts.

22 Grand Panorama of Iide Peaks & Autumn Beech Trees [Oguni-machi, Okitama Region]

Enjoy viewing beech ("buna") trees while trekking through the Taruguchi mountain trail, listening to tales from local "Matagi" hunters, and bathing in hot springs.

1 Hina no Michi Tea Ceremony [Yamagata-shi, Murayama Region]

A tea ceremony event is held here.

2 Zaō Frosted Tree Festival [Yamagata-shi, Murayama Region]

Various activities take place at the Zaō hot spring and ski resort.

2 Daytime & Nighttime Frosted Trees [Yamagata-shi, Murayama Region]

Seeing the frosted trees both during the day and at night is a must. At night, they are illuminated in various colors against the pitch black night, producing an otherworldly sight completely unlike the sight during the day.

3 Candlelit Night at Kaminoyama Castle [Kaminoyama-shi, Murayama Region]

Enjoy otherworldly scenery at this candlelit spectacle event.



- Winter -

3 Kaminoyama Castle New Year's Event [Kaminoyama-shi, Murayama Region]

Watch the first sunrise of the year over Mount Sankichi, standing from this view point.

5 Snow Park Festival [Tendō-shi, Murayama Region]

A tube sliding event aimed at allowing children to experience nature. *Ski resort open from mid-December through end of March.

8 Hina Doll's Festival at Ōe [Ōe-machi, Murayama Region]

Enjoy viewing hina dolls that have been passed down through generations in an old home that contributes to the area's cultural heritage.

19 Uesugi Light Festival [Yonezawa-shi, Okitama Region]

This winter festival serves as the symbol of Yonezawa, a region known for snow. The grounds are illuminated by 300 light towers and 3000 lanterns.